

ShadeWave Mobile Quickstart

To Purchase

From ShadeWave.Com → ShadeWave Dentist Mobile → Buy Now (enter coupon code if you have one)
Create a Profile Page including your user name and password, and Select Your Lab
Go to the Apple Store, download SW Mobile (download will be free) and enter your user Name and password

What You Need Before You Get Started

Use an iPhone 8 or newer, for best results choose a model with dual cameras.
Good internet access (Wi-Fi or data) is needed. Authentication errors or slow uploads indicate internet issues. If you have an authentication error or can't create a case, turn the phone completely off and then restart.
Set Screen Dimming to 3 minutes (Settings → Display and Brightness → Auto Lock → change to 3 minutes)
A phone grip makes it easier to hold the phone.
Hold the phone horizontally with the camera lens in the upper left corner

SHADEWAVE MOBILE WORKFLOW

Log In

Create Case

Choose Your Lab (just once)

Identify Shade Tabs*

Save Case

Take Shade Photos

Select “Use Without Device”

White Balance (just once) **

Hold shade tabs under the tooth with incisal edge always up, even for a lower tooth

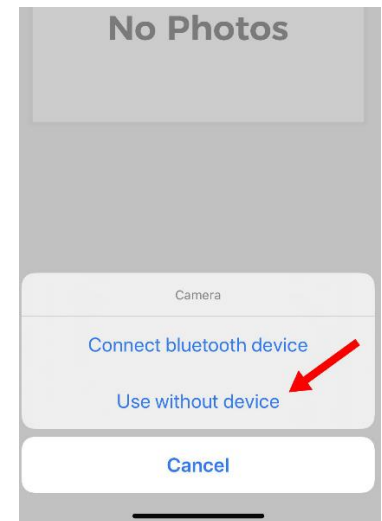
Be about 4 ½ inches from the subject

Say “SNAP” to make the picture

Take 2 or 3 pictures at different pitches and include a full face

Go to Gallery to view pictures and retake if needed

Say “UPLOAD” to send the case to your cloud account and your lab



***Shade Tabs** Always use an A2 on your left and a D3 on your right. This gives consistency. Shade Tabs are only used as a calibrating reference for shade analysis so the lab must know the shade tab name, or they can't process the case. ALWAYS, INCISAL EDGE UP EVEN FOR LOWER TEETH.

****White Balance**

The first time you create a case, you will be prompted to White Balance your camera. In your operatory, hold the camera about 6 inches from a gray card or white paper, select **Ready**, then select **Save**. Unless your lighting conditions change, you only need to do this once.